

## STANDARD FEATURES

- ◆ A Freestanding Range consists of a rangetop and a base (plus 6" legs, casters, or curb base)
- ◆ Please refer to each specific product spec sheet for detailed product information
- ◆ Any of the following rangetops (or combinations) can be used to configure a Freestanding Range :
  - Sealed Burner Rangetops
  - Hot Tops
  - French Tops
  - Manual Griddles
  - Thermostatic Griddles
  - Charbroilers
  - Planchas
  - Work Tops



## FREESTANDING RANGE



Model number as shown HMB366SO



- ◆ Any of the following bases can be used to configure a Freestanding Range :
  - Standard Ovens
  - Convection Ovens
  - Cabinet Bases
  - Refrigerated Bases
  - Freezer Bases
- ◆ A range-mount broiler can be added (except over a charbroiler) :
  - Range-mount Salamander
  - Range-mount Cheesemelter
- ◆ 1-1/4" front gas manifold
- ◆ Heavy gauge welded body construction
- ◆ Zamak die cast knobs and bezels with set screws *(Patent Pending)*
- ◆ Stainless front, sides, 4.5" plate shelf, and bottom
- ◆ 9" tall LowRiser
- ◆ 6" height adjustable legs (4)

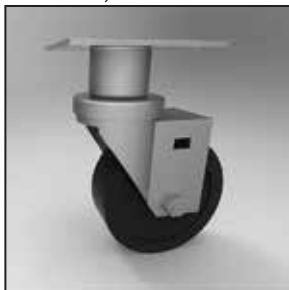
## OPTIONS

- ◆ Colors (contact sales department for available colors)
- ◆ Customizable Marquise accented™ valve panel *(patent pending / contact sales department for available options)*
- ◆ Manifold caps and covers
- ◆ 1" rear gas supply connection
- ◆ Front manifold union connections
- ◆ Stainless steel back cover
- ◆ Common plate shelf up to 108" wide
- ◆ Extended plate shelf (6" or 8")
- ◆ Belly bar with 1" space or extended to accommodate 1/9 condiment pans
- ◆ Risers : Tall, Mid, or Island Trim
- ◆ Shelves : single or double, solid, tubular or mixed
- ◆ 6" height adjustable casters (4). Two (2) with brakes
- ◆ Curb base

Range Mount Salamander



Adjustable Casters



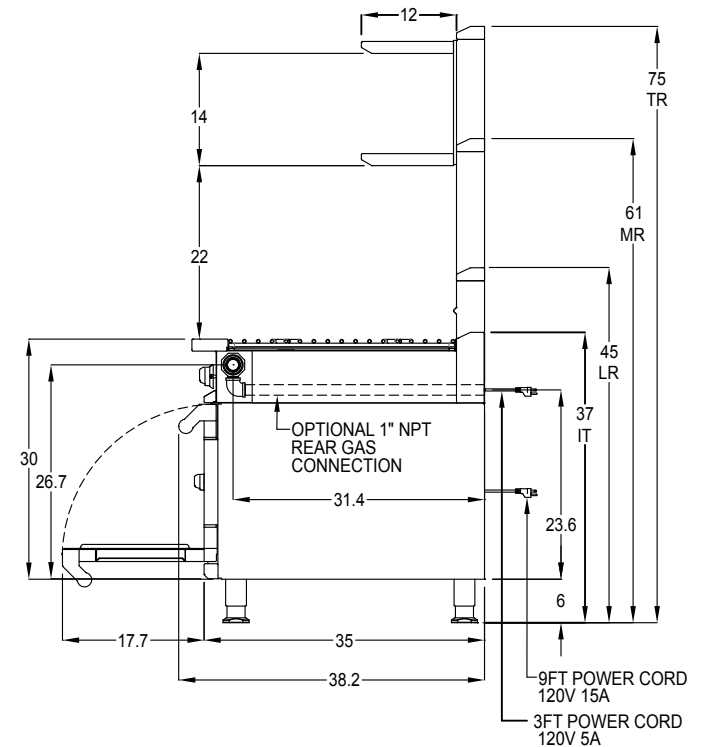
Colors Available



Model	Description	Gas [Btu/HR]	Amps	Approx SHP WT
HMB366__	36" 6-burner range with __ oven	220,000	5	685
HMB364__	36" 4-burner range with __ oven	160,000	5	645
HCH36__	36" Charbroiler range with __ oven	160,000	5	825
HMG36__	36" Manual Griddle range with __ oven	115,000	5	825
HTG36__	36" Thermostatic Griddle range with __ oven	115,000	5	825
HPG36__	36" Plancha Griddle range with __ oven	100,000	5	825
HFT362__	36" French Top range with __ oven	110,000	5	965
HHT362__	36" 2-Hot Tops range with __ oven	120,000	5	885
HHT363__	36" 3-Hot Tops range with __ oven	130,000	5	935
SO – Standard oven    CO – Convection oven				

For other rangetops and base combinations not shown, including with range-mount salamander / cheesemelter, please contact sales department for modular model designations

*Note: Hestan Commercial products are not approved or recommended for residential use. Hestan Commercial Corporation reserves the right to change materials and specifications without notice. Specify type of gas when ordering. Specify altitude when above 2,000 ft.*



**ELECTRICAL** : No electrical requirement except with sealed burner rangetops, standard ovens, convection ovens, refrigerated bases, or freezer bases : 120V, 60Hz, 15A, 1 phase.

**GAS** : 1-1/4" front manifold, capped or connectable to adjacent equipment. 1" male NPT rear gas connection available. Minimum gas supply is 7" water column for natural gas and 11" for propane. Operating pressure at the manifold is 5" water column for natural gas and 10" for propane. All units require a regulated gas supply.

**VENTILATION** : The product is required to be installed under an exhaust hood.

