

STANDARD FEATURES

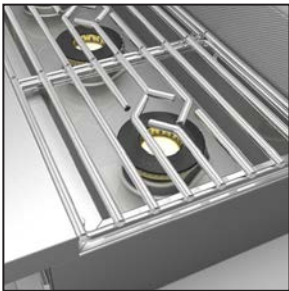


STEP UP

- ◆ High performance CircuFlame™ single flow burner systems
 - Single Ring at 25,000 Btu/hour for optimum cooking performance (*Patent Pending*)
 - Cast brass lift-off burner cap and base for easy cleaning
- ◆ Stainless steel fully sealed burner bowl for easy cleaning
- ◆ Brass standing pilot ignition with clog resistant design at each burner position (HSUP models only)
- ◆ 5.5" Step Up to rear burners

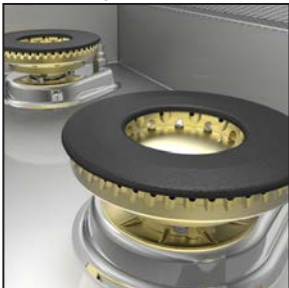


1/2" Diameter Rod Grates



- ◆ Heavy gauge welded body construction
- ◆ Stainless steel, high polished, 1/2" diameter rod grates, (*Patented*) adjustable height for leveling
- ◆ Available from 24" to 36" wide configurations
- ◆ 1-1/4" front gas manifold
- ◆ Zamak die cast knobs and bezels with set screws (*Patented*)
- ◆ Stainless steel front, sides, 4.5" plate shelf, and bottom
- ◆ 9" tall Low FlueRiser
- ◆ Single point re-ignition direct spark system and modules at each burner positions. Flame rectification means igniter will continue to spark until the burner flame is established (HSU models only)

Single Flow Burner



Welded Construction

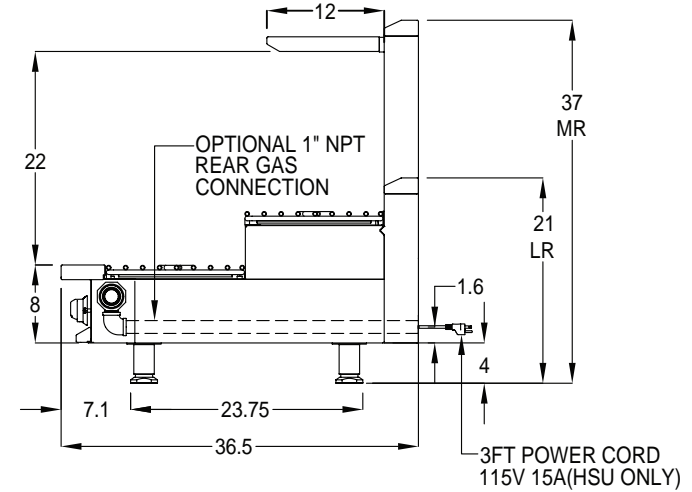
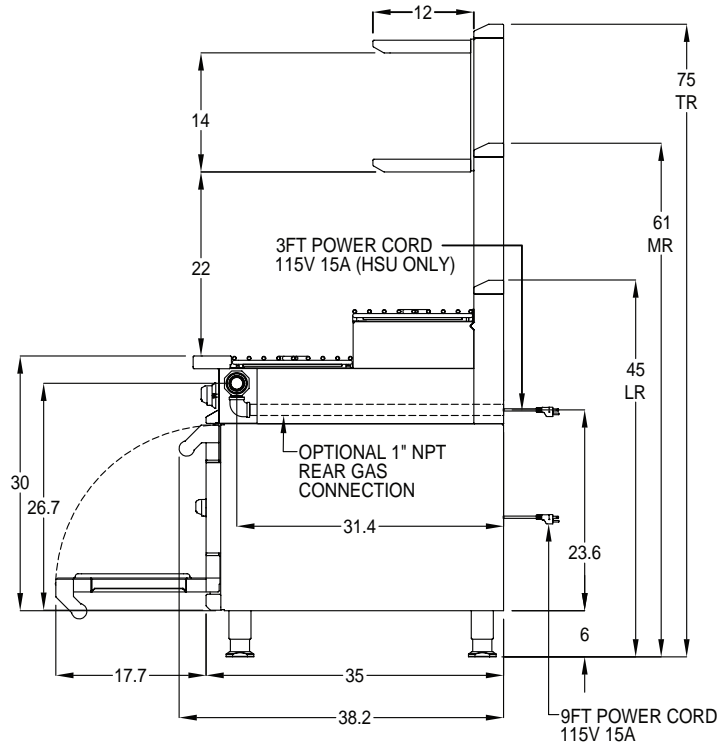
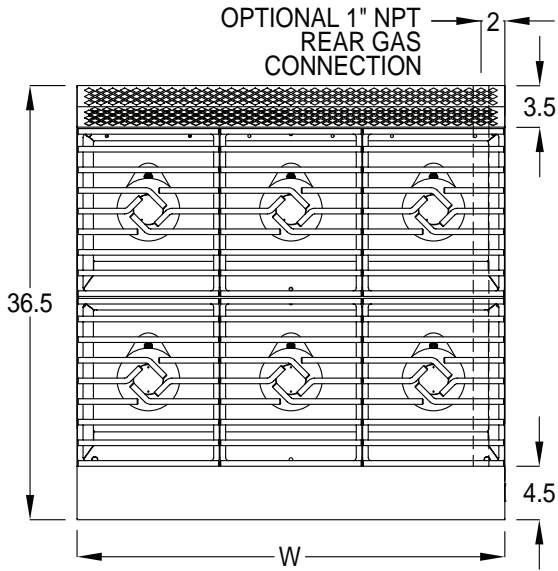


Model number as shown HSU366



OPTIONS

- ◆ Customizable Marquise accented™ valve panel (*Patented* / contact sales department for available options)
- ◆ Manifold caps and covers
- ◆ 1" rear gas supply connection
- ◆ Front manifold union connections
- ◆ Stainless steel back cover
- ◆ Common plate shelf up to 108" wide
- ◆ Extended plate shelf (6" or 8")
- ◆ Belly bar with 1" space or extended to accommodate 1/9 condiment pans
- ◆ 4" legs for countertop models
- ◆ Risers: Tall or Mid
- ◆ Shelves: single or double, solid, tubular or mixed



Model	Description	Gas [Btu/HR]	Amps	Approx SHP WT	Width (W)
HSU244	24" Width Step Up (2 Single Front, 2 Single Rear Burners)	100,000	1	170	24"
HSU366	36" Width Step Up (3 Single Front, 3 Single Rear Burners)	150,000	1	240	36"
HSUP244	24" Width Step Up (2 Single Front, 2 Single Rear Burners), Standing Pilot	100,000	N/A	170	24"
HSUP366	36" Width Step Up (3 Single Front, 3 Single Rear Burners), Standing Pilot	150,000	N/A	240	36"

ELECTRICAL : 120V, 60Hz, 5A, 1 phase. (HSU models only)

GAS : 1-1/4" front manifold, capped or connectable to adjacent equipment. 1" male NPT rear gas connection available. Minimum gas supply is 7" water column for natural gas and 11" for propane. Operating pressure at the manifold is 5" water column for natural gas and 10" for propane. All units require a regulated gas supply.

VENTILATION : The product is required to be installed under an exhaust hood.

Note: Hestan Commercial products are not approved or recommended for residential use. Hestan Commercial Corporation reserves the right to change materials and specifications without notice. Specify type of gas when ordering. Specify altitude when above 2,000 ft.

