

Commercial Service Parts

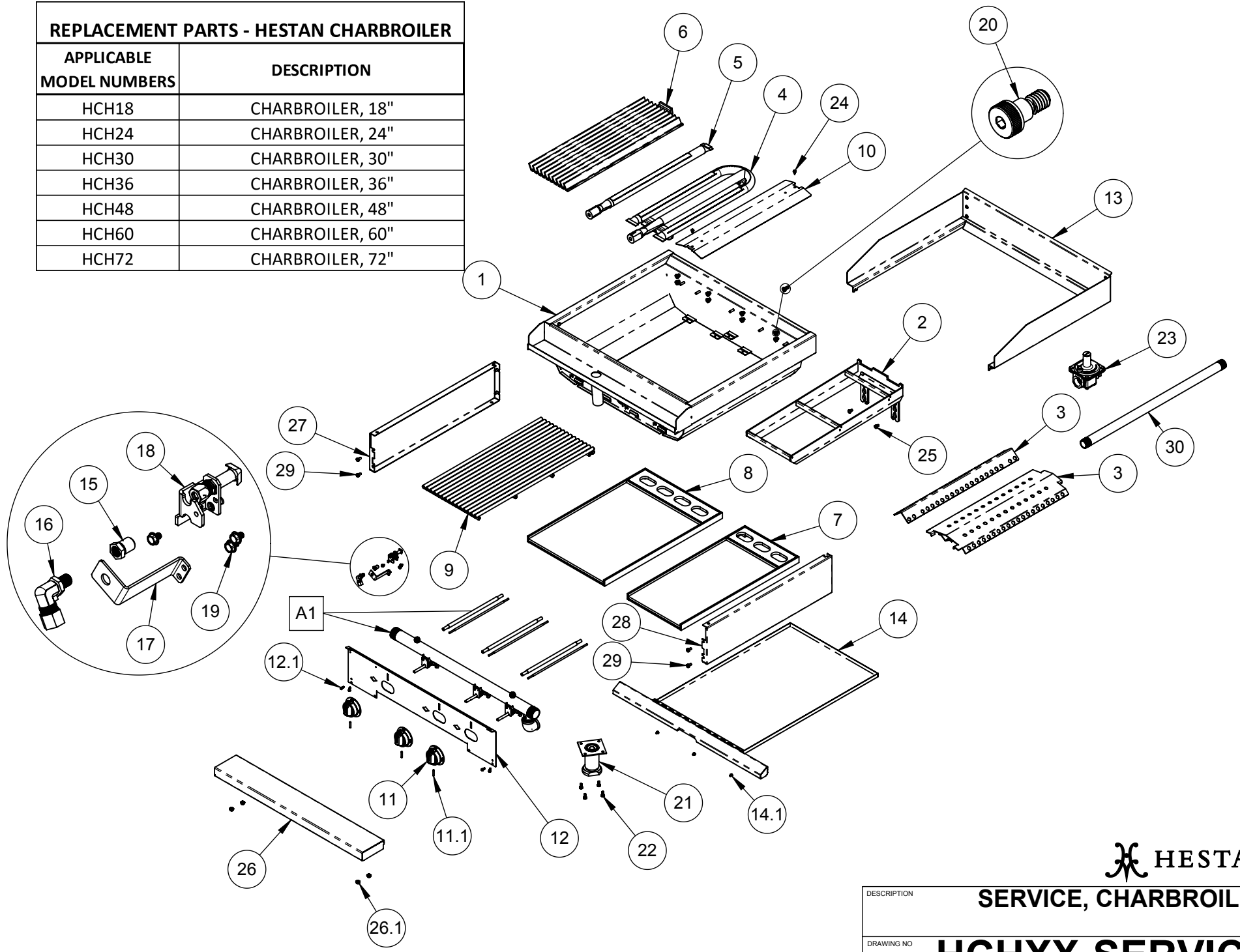
CHARBROILER (HCH)

Hestan Commercial Corporation
3375 E. La Palma Ave.
Anaheim, CA 92806
(888) 905-7463

RETAIN THIS FOR FUTURE REFERENCE

Revised: May 15, 2020

REPLACEMENT PARTS - HESTAN CHARBROILER	
APPLICABLE MODEL NUMBERS	DESCRIPTION
HCH18	CHARBROILER, 18"
HCH24	CHARBROILER, 24"
HCH30	CHARBROILER, 30"
HCH36	CHARBROILER, 36"
HCH48	CHARBROILER, 48"
HCH60	CHARBROILER, 60"
HCH72	CHARBROILER, 72"



HESTAN

SERVICE, CHARBROILER

DESCRIPTION

DRAWING NO

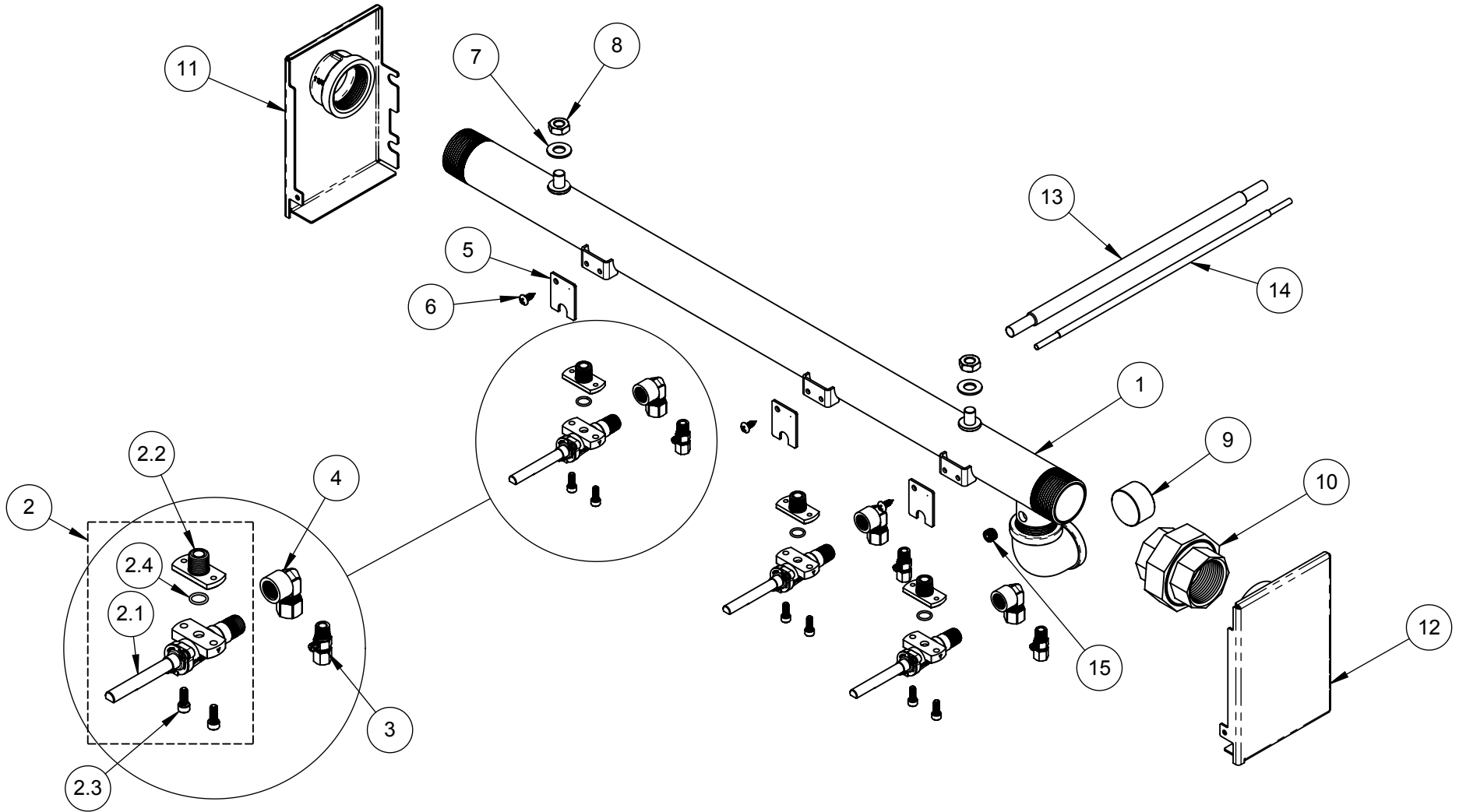
HCHXX-SERVICE

CHARBROILER - SERVICE PARTS LIST

Item No.	Part No.	DESCRIPTION	HCH18	HCH24	HCH30	HCH36	HCH48	HCH60	HCH72
			QTY	QTY	QTY	QTY	QTY	QTY	QTY
1	000804	FIREBOX, CHAR-BROILER, WA, 18	1	-	-	-	-	-	-
	000959	FIREBOX, CHAR-BROILER, WA, 24	-	1	-	-	-	-	-
	000953	FIREBOX, CHAR-BROILER, WA, 30	-	-	1	-	-	-	-
	000140	FIREBOX, CHAR-BROILER, WA, 36	-	-	-	1	-	-	-
	001010	FIREBOX, CHAR-BROILER, WA, 48	-	-	-	-	1	-	-
	001021	FIREBOX, CHAR-BROILER, WA, 60	-	-	-	-	-	1	-
	001019	FIREBOX, CHAR-BROILER, WA, 72	-	-	-	-	-	-	1
2	000830	SUPPORT, GRATE, CHAR-BROILER, 15.7" WA	1	-	1	-	-	-	-
	000125	SUPPORT, GRATE, CHAR-BROILER, 11.0" WA	-	2	1	3	4	5	6
3	003341	RADIANT, NARROW, CHAR-BROILER, WA	1	2	1	-	-	-	-
	004319	RADIANT, CHAR-BROILER, WA, 18/30	1	-	1	-	-	-	-
	001358	RADIANT, CHAR-BROILER, WA	-	-	1	3	4	5	6
4	000259	BURNER, U-TUBE, 40K BTU, OVEN/CHARBROILER	1	2	2	3	4	5	6
5	000839	BURNER, TUBE, 20000 BTU	1	-	1	-	-	-	-
6	000828	GRATE, CAST IRON, 7.86", CHAR-BROILER	2	-	2	-	-	-	-
	000129	GRATE, CAST IRON, 5.50", CHAR-BROILER	-	4	2	6	8	10	12
7	001960	PLATE, SEAR, 11", CHAR-BROILER, WA	-	X	-	X	X	X	X
8	001970	PLATE, SEAR, 15.7", CHAR-BROILER, WA	X	-	X	-	-	-	-
9	002612	GRATE, SS ROD, 15.8", CHAR-BROILER	1	-	1	-	-	-	-
	002607	GRATE, SS ROD, 11", CHAR-BROILER	-	2	1	3	4	5	6
10	001841	HEAT SHIELD, L/R, CHAR-BROILER	2	2	2	2	2	2	2
	000138	HEAT SHIELD, CTR, CHAR-BROILER	-	1	2	4	4	6	8
11	000130	KNOB ASSY, ON-OFF, 100%	2	2	3	3	4	5	6
11.1	014299	SERVICE, SETSCREW, #10-24 X 1.000, CUP PT., SS, PKG 6	1	1	1	1	1	1	1
12	004283	PANEL, CONTROL, CHAR-BROILER, ASSY., 18	1	-	-	-	-	-	-
	004290	PANEL, CONTROL, CHAR-BROILER, ASSY., 24	-	1	-	-	-	-	-
	004291	PANEL, CONTROL, CHAR-BROILER, ASSY., 30	-	-	1	-	-	-	-
	001852	PANEL, CONTROL, CHAR-BROILER, ASSY., 36	-	-	-	1	-	-	-
	004293	PANEL, CONTROL, CHAR-BROILER, ASSY., 48	-	-	-	-	1	-	-

Item No.	Part No.	DESCRIPTION	HCH18	HCH24	HCH30	HCH36	HCH48	HCH60	HCH72
			QTY	QTY	QTY	QTY	QTY	QTY	QTY
	004299	PANEL, CONTROL, CHAR-BROILER, ASSY., 60	-	-	-	-	-	1	-
	004301	PANEL, CONTROL, CHAR-BROILER, ASSY., 72	-	-	-	-	-	-	1
12.1	012672	SERVICE, SMS, 10-24 X 1/2, PH, PAN, TYPE F, SS, PKG 4	1	1	1	1	1	1	2
13	AHCSS18	ASSY., SIDE & REAR SPLASH, CHAR-BROILER, 18	1	-	-	-	-	-	-
	AHCSS24	ASSY., SIDE & REAR SPLASH, CHAR-BROILER, 24	-	1	-	-	-	-	-
	AHCSS30	ASSY., SIDE & REAR SPLASH, CHAR-BROILER, 30	-	-	1	-	-	-	-
	AHCSS36	ASSY., SIDE & REAR SPLASH, CHAR-BROILER, 36	-	-	-	1	-	-	-
	AHCSS48	ASSY., SIDE & REAR SPLASH, CHAR-BROILER, 48	-	-	-	-	1	-	-
	AHCSS60	ASSY., SIDE & REAR SPLASH, CHAR-BROILER, 60	-	-	-	-	-	1	-
	AHCSS72	ASSY., SIDE & REAR SPLASH, CHAR-BROILER, 72	-	-	-	-	-	-	1
14	000791	ASSY., DRIP PAN, CHAR-BROILER, 18	1	-	-	-	-	-	-
	002927	ASSY., DRIP PAN, CHAR-BROILER, 24	-	1	-	-	-	-	-
	000785	ASSY., DRIP PAN, CHAR-BROILER, 30	-	-	1	-	-	-	-
	000373	ASSY., DRIP PAN, CHAR-BROILER, 36	-	-	-	1	-	-	-
	004892	ASSY., DRIP PAN, CHAR-BROILER, 48 LH	-	-	-	-	1	-	-
	004893	ASSY., DRIP PAN, CHAR-BROILER, 48 RH	-	-	-	-	1	-	-
	004931	ASSY., DRIP PAN, CHAR-BROILER, 60 LH	-	-	-	-	-	1	-
	004932	ASSY., DRIP PAN, CHAR-BROILER, 60 RH	-	-	-	-	-	1	-
	000980	ASSY., DRIP PAN, CHAR-BROILER, 72 LH	-	-	-	-	-	-	1
000981	ASSY., DRIP PAN, CHAR-BROILER, 72 RH	-	-	-	-	-	-	1	
14.1	010237	SERVICE, MS, 10-24 X 1/4, HEXHD, SS, PKG 6	1	1	1	1	1	1	1
15	000293-033	ORIFICE, HOOD (NG) "U BURNER"	1	2	2	3	4	5	6
	000293-047	ORIFICE, HOOD (NG) "STRAIGHT BURNER"	1	-	1	-	-	-	-
	000293-051	ORIFICE, HOOD (LP) "U BURNER"	1	2	2	3	4	5	6
	000293-055	ORIFICE, HOOD (LP) "STRAIGHT BURNER"	1	-	1	-	-	-	-
16	000917	HOLDER, ORIFICE, BULKHEAD, SMALL	2	2	3	3	4	5	6
17	001840	BRACKET, ORIFICE, CHAR-BROILER	2	2	3	3	4	5	6
18	001650	ASSY., PILOT BURNER, CHAR-BROILER (NG)	2	2	3	3	4	5	6
	012274	ASSY., PILOT BURNER, CHAR-BROILER (LP)	2	2	3	3	4	5	6
19	014023	SERVICE, MS, 10-32 X 1/4, HEXWAS, TAP-TITE, SS, PKG 3	2	2	3	3	4	5	6
20	014051	SERVICE, SB, 5/16-18 X 3/8DIA X 5/16L, SS, PKG 4	1	2	2	2	2	3	3
21	000470	ADJUSTABLE LEG, ASSY., 4"	4	4	4	4	6	6	6
22	014191	SERVICE, HB, 1/4-20 X 5/8, SS, PKG 4	4	4	4	4	6	6	6

Item No.	Part No.	DESCRIPTION	HCH18	HCH24	HCH30	HCH36	HCH48	HCH60	HCH72
			QTY	QTY	QTY	QTY	QTY	QTY	QTY
23	004163	REGULATOR, STRAIGHT-THRU, 1"NPT, NG	1	1	1	1	1	1	1
	004162	REGULATOR, STRAIGHT-THRU, 1"NPT, LP	1	1	1	1	1	1	1
	004165	REGULATOR, STRAIGHT-THRU, 1-1/4"NPT, NG	1	1	1	1	1	1	1
	004164	REGULATOR, STRAIGHT-THRU, 1-1/4"NPT, LP	1	1	1	1	1	1	1
24	010241	SERVICE, SMS, #10 X .5, SLOT, HEXWSH, SS, PKG 4	1	1	1	1	1	1	2
25	014116	SERVICE, HB, 1/4-20 X .438, SS, PKG 6	1	1	1	1	2	2	2
26	003660	PLATE SHELF, 18, W/A	1	-	-	-	-	-	-
	003662	PLATE SHELF, 24, W/A	-	1	-	-	-	-	-
	003663	PLATE SHELF, 30, W/A	-	-	1	-	-	-	-
	003664	PLATE SHELF, 36, W/A	-	-	-	1	-	-	-
	003665	PLATE SHELF, 48, W/A	-	-	-	-	1	-	-
	003667	PLATE SHELF, 60, W/A	-	-	-	-	-	1	-
	003668	PLATE SHELF, 72, W/A	-	-	-	-	-	-	1
	034423	PLATE SHELF, 6" EXTENDED, WA, 18	1	-	-	-	-	-	-
	034424	PLATE SHELF, 6" EXTENDED, WA, 24	-	1	-	-	-	-	-
	013144	PLATE SHELF, 6" EXTENDED, WA, 30	-	-	1	-	-	-	-
	006053	PLATE SHELF, 6" EXTENDED, WA, 36	-	-	-	1	-	-	-
	017899	PLATE SHELF, 6" EXTENDED, WA, 48	-	-	-	-	1	-	-
	012814	PLATE SHELF, 6" EXTENDED, WA, 60	-	-	-	-	-	1	-
	001868	PLATE SHELF, 6" EXTENDED, WA, 72	-	-	-	-	-	-	1
	034427	PLATE SHELF, 8" EXTENDED, WA, 18	1	-	-	-	-	-	-
	034426	PLATE SHELF, 8" EXTENDED, WA, 24	-	1	-	-	-	-	-
	034425	PLATE SHELF, 8" EXTENDED, WA, 30	-	-	1	-	-	-	-
	006069	PLATE SHELF, 8" EXTENDED, WA, 36	-	-	-	1	-	-	-
	021507	PLATE SHELF, 8" EXTENDED, WA, 48	-	-	-	-	1	-	-
	026249	PLATE SHELF, 8" EXTENDED, WA, 60	-	-	-	-	-	1	-
021508	PLATE SHELF, 8" EXTENDED, WA, 72	-	-	-	-	-	-	1	
26.1	012685	NUT, LOCK, SERRATED FLANGE, 1/4-20, PKG 4	1	1	1	1	1	2	2
27	000501	PANEL, SIDE, LH, RANGETOP	1	1	1	1	1	1	1
28	000122	PANEL, SIDE, RH, RANGETOP	1	1	1	1	1	1	1
29	013303	SERVICE, HB, 1/4-20 X .5, ZN, PKG 8	1	1	1	1	1	1	1
30	AHRGC	REAR GAS CONNECTION, 1" NPT	1	1	1	1	1	1	1



30" MANIFOLD SHOWN FOR REFERENCE

 HESTAN

DESCRIPTION
**SERVICE, MANIFOLD, GAS
 ASSY., CHARBROILER**

DRAWING NO

A1

A1 - GAS MANIFOLD ASSEMBLY - CHARBROILER

Item No.	Part No.	DESCRIPTION	HCH18	HCH24	HCH30	HCH36	HCH48	HCH60	HCH72
			QTY	QTY	QTY	QTY	QTY	QTY	QTY
1	000836	MANIFOLD, CHARBROILER, 18, W/A	1	-	-	-	-	-	-
	000962	MANIFOLD, CHARBROILER, 24, W/A	-	1	-	-	-	-	-
	000957	MANIFOLD, CHARBROILER, 30, W/A	-	-	1	-	-	-	-
	000370	MANIFOLD, CHARBROILER, 36, W/A	-	-	-	1	-	-	-
	002439	MANIFOLD, CHARBROILER, 48, W/A	-	-	-	-	1	-	-
	004586	MANIFOLD, CHARBROILER, 60, W/A	-	-	-	-	-	1	-
	002003	MANIFOLD, CHARBROILER, 72, W/A	-	-	-	-	-	-	1
2	015662	KIT, VALVE, ON-OFF, FLANGE-MOUNT, A23-F	2	2	3	3	4	5	6
2.1	015668	VALVE BODY, ON-OFF, FLANGE-MOUNT, A23-F	2	2	3	3	4	5	6
2.2	004643	FLANGED NIPPLE, 1/4 NPT	2	2	3	3	4	5	6
2.3	012750	SERVICE, SHCS, 10-24 X .500, SS, PKG 6	1	1	1	1	2	2	2
2.4	014103	SERVICE, O-RING, FLANGED NIPPLE, PKG 6	1	1	1	1	1	1	1
3	000113	VALVE, PILOT, 1/8NPT X 3/16 COMP., ELBOW	2	2	3	3	4	5	6
4	002321	ELBOW, ADAPTER, 1/4 NPT FEMALE X 3/8 CC	2	2	3	3	4	5	6
5	001413	BRACKET, VALVE ANTI-ROTATION, STD.	2	2	3	3	4	5	6
6	012689	SERVICE, SMS, #10 X .5, PH, PAN, PKG 3	1	1	1	1	2	2	2
7	012679	SERVICE, WSH, FLAT, 3/8 SAE, PKG 4	1	1	1	1	1	1	1
8	012681	SERVICE, NUT, 3/8-16 X .25, PKG 4	1	1	1	1	1	1	1
9	000258	PLUG, SQUARE SOCKET, 1" NPT	1	1	1	1	1	1	1
10	000254	UNION, 1.25", NPT - 5P594	1	1	1	1	1	1	1
11	AHCCL	CAP, MANIFOLD, LEFT, ASSY.	1	1	1	1	1	1	1
12	AHCCR	CAP, MANIFOLD, RIGHT, ASSY.	1	1	1	1	1	1	1
13	005682	HOSE, FLEX, 3/8 OD, 12", F-F, NUT/FERRULE	2	2	3	3	4	5	6
14	005687	HOSE, FLEX, 3/16 OD, 12", F-F, NUT/FERRULE	2	2	3	3	4	5	6
15	000360	PLUG, HEX SOCKET, 1/8" NPT	1	1	1	1	1	1	1