



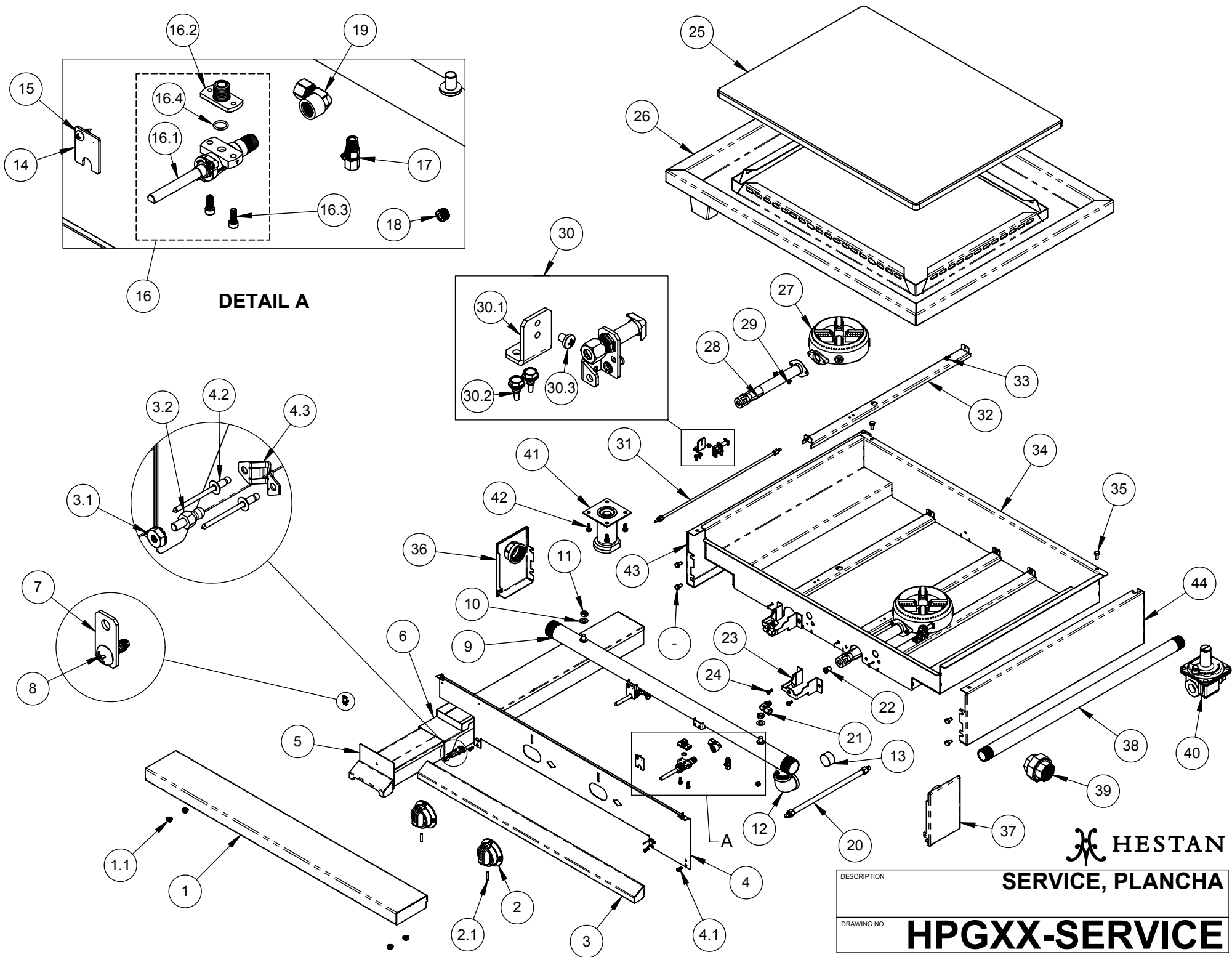
Commercial Service Parts

PLANCHA (HPG)

Hestan Commercial Corporation
3375 E. La Palma Ave.
Anaheim, CA 92806
(888) 905-7463

RETAIN THIS FOR FUTURE REFERENCE

Revised: May 15, 2020



DETAIL A

HESTAN

SERVICE, PLANCHA

DESCRIPTION

DRAWING NO

HPGXX-SERVICE

PLANCHA - SERVICE PARTS LIST

Item No.	Part No.	DESCRIPTION	HPG18	HPG24	HPG30	HPG36
			QTY	QTY	QTY	QTY
1	003660	PLATE SHELF, 18, W/A	1	-	-	-
	003662	PLATE SHELF, 24, W/A	-	1	-	-
	003663	PLATE SHELF, 30, W/A	-	-	1	-
	003664	PLATE SHELF, 36, W/A	-	-	-	1
	034423	PLATE SHELF, 6" EXTENDED, WA, 18	1	-	-	-
	034424	PLATE SHELF, 6" EXTENDED, WA, 24	-	1	-	-
	013144	PLATE SHELF, 6" EXTENDED, WA, 30	-	-	1	-
	006053	PLATE SHELF, 6" EXTENDED, WA, 36	-	-	-	1
	034427	PLATE SHELF, 8" EXTENDED, WA, 18	1	-	-	-
	034426	PLATE SHELF, 8" EXTENDED, WA, 24	-	1	-	-
	034425	PLATE SHELF, 8" EXTENDED, WA, 30	-	-	1	-
006069	PLATE SHELF, 8" EXTENDED, WA, 36	-	-	-	1	
1.1	012685	SERVICE, NUT, LOCK, SERRATED FLANGE, 1/4-20, PKG 4	1	1	1	1
2	000130	KNOB ASSY, ON-OFF, 100%	1	1	1	2
2.1	014299	SERVICE, SETSCREW, #10-24 X 1.000, CUP PT, SS, PKG 6	1	1	1	1
3	004348	CHIN, CONTROL PANEL, GRIDDLE, 18, ASSY	1	-	-	-
	004396	CHIN, CONTROL PANEL, GRIDDLE, 24, ASSY	-	1	-	-
	004315	CHIN, CONTROL PANEL, GRIDDLE, 30, ASSY	-	-	1	-
	004129	CHIN, CONTROL PANEL, GRIDDLE, 36, ASSY	-	-	-	1
3.1	021688	SERVICE, NUT, KEPS, 6-32, PKG 4	1	1	1	1
3.2	012687	BALL STUD, MALE, 6-32 UNC, PKG 4	1	1	1	1
4	004337	PANEL, CONTROL, PLANCHA, 18", ASSY	1	-	-	-
	004394	PANEL, CONTROL, PLANCHA, 24", ASSY	-	1	-	-
	004313	PANEL, CONTROL, PLANCHA, 30", ASSY	-	-	1	-
	003648	PANEL, CONTROL, PLANCHA, 36", ASSY	-	-	-	1
4.1	012672	SERVICE, SMS, #10-24 X 1/2, PAN, PH, TYPE F, SS, PKG 4	1	1	1	1
4.2	012751	POP RIVET, CSINK, 1/8DIA X .275L, SS, PKG 8	1	1	1	1
4.3	012752	RECEPTACLE, BALL STUD, 18LB PULL, PKG 4	1	1	1	1
5	000400	TRAY, GREASE CAN, GRIDDLE, ASSY	1	1	1	1
6	000416	GUIDE, GREASE CAN, GRIDDLE, W/A	1	1	1	1

Item No.	Part No.	DESCRIPTION	HPG18	HPG24	HPG30	HPG36
			QTY	QTY	QTY	QTY
-	031645	SCRAPER, GREASE CAN SLEEVE, GRIDDLE (NOT SHOWN)	1	1	1	1
7	001780	TAB, HOLD-DOWN, LEFT MANIFOLD CAP	1	1	1	1
8	012672	SERVICE, SMS, #10-24 X 1/2, PAN, PH, TYPE F, SS, PKG 4	1	1	1	1
9	001182	MANIFOLD, FT, PG, HT, 18, WA	1	-	-	-
	001179	MANIFOLD, FT, PG, 24, WA	-	1	-	-
	001999	MANIFOLD, PLANCHA, 30, WA	-	-	1	-
	001031	MANIFOLD, PLANCHA, 36, WA	-	-	-	1
10	012679	SERVICE, WSH, FLAT, 3/8 SAE, PKG 4	1	1	1	1
11	012681	SERVICE, NUT, 3/8-16 X .25, PKG 4	1	1	1	1
12	000256	ELBOW, 1" NPT, IRON	1	1	1	1
13	000258	PLUG, SQUARE SOCKET, 1" NPT	1	1	1	1
14	001413	BRACKET, VALVE ANTI-ROTATION	1	1	1	2
15	012689	SERVICE, SMS, #10 X .5, PH, PAN, PKG 3	1	1	1	1
16	015662	KIT, VALVE, ON-OFF, FLANGE-MOUNT, A23-F	1	1	1	2
16.1	015668	VALVE BODY, ON-OFF, FLANGE-MOUNT, A23-F	1	1	1	1
16.2	004643	FLANGED NIPPLE, 1/4"NPT	1	1	1	2
16.3	012750	SERVICE, SHCS, #10-24 X .500, SS, PKG 6	1	1	1	1
16.4	014103	SERVICE, O-RING, FLANGED NIPPLE, PKG 6	1	1	1	1
17	000859	VALVE, PILOT, 1/8NPT X 3/16 COMP, STRAIGHT	1	1	1	2
18	000360	PLUG, HEX SOCKET, 1/8 NPT	1	1	1	1
19	002321	ELBOW, ADAPTER, 1/4 NPT FEMALE X 3/8 CC	1	1	1	2
20	005682	HOSE, FLEX, 3/8 OD, 12" F-F, NUT/FERRULE	1	1	1	2
21	000917	HOLDER, ORIFICE, BULKHEAD, SMALL	1	1	1	2
22	000293-040	ORIFICE, HOOD, #40 (NG)	1	1	1	2
	000293-053	ORIFICE, HOOD, #53 (LP)	1	1	1	2
23	000932	BULK HEAD BRACKET, FT HT PG	1	1	1	2
24	013390	SERVICE, MS, 10-24 X .500, SL, HEXWAS, SS, PKG 4	1	1	1	1
25	AHPPS18	PLATE, PLANCHA, 18", WA	1	-	-	-
	AHPPS24	PLATE, PLANCHA, 24", WA	-	1	-	-
	AHPPS30	PLATE, PLANCHA, 30", WA	-	-	1	-
	AHPPS36	PLATE, PLANCHA, 36", WA	-	-	-	1
	AHPPM18	MIRRORED PLATE, PLANCHA, 18", WA	1	-	-	-
	AHPPM24	MIRRORED PLATE, PLANCHA, 24", WA	-	1	-	-
	AHPPM30	MIRRORED PLATE, PLANCHA, 30", WA	-	-	1	-

Item No.	Part No.	DESCRIPTION	HPG18	HPG24	HPG30	HPG36
			QTY	QTY	QTY	QTY
	AHPPM36	MIRRORED PLATE, PLANCHA, 36", WA	-	-	-	1
26	000913	TROUGH, PLANCHA, 18", WA	1	-	-	-
	001107	TROUGH, PLANCHA, 24", WA	-	1	-	-
	000886	TROUGH, PLANCHA, 30", WA	-	-	1	-
	000589	TROUGH, PLANCHA, 36", WA	-	-	-	1
27	000485	BURNER ASSY, CAST IRON	1	1	1	2
28	000745	VENTURI STAINLESS, 9"	1	1	1	2
29	012700	SERVICE, MS, 10-24 X 1/4, HEX HEAD, SS, PKG 6	1	1	1	1
30	001831	PILOT ASSY., RIGHT ANGLE, 5CL-2 NG	1	1	1	2
	006035	PILOT ASSY., RIGHT ANGLE, 5CL-2 LP	1	1	1	2
30.1	001668	BRACKET, PILOT, PLANCHA	1	1	1	2
30.2	014381	SERVICE, SMS, TEK, #10 X 1/2", ZN, PKG 6	1	1	1	1
30.3	013391	SERVICE, MS, 10-32 X .25, PH, PAN, SS, PKG 4	1	1	1	1
31	005688	HOSE, FLEX, 3/16 OD, 18", F-F, NUT/FERRULE	1	1	1	2
32	001391	BURNER HANGER, PLANCHA	2	2	2	4
33	014381	SERVICE, SMS, TEK, #10 X 1/2", ZN, PKG 6	1	1	1	1
34	004068	FIREBOX, PLANCHA, 18", WA	1	-	-	-
	004078	FIREBOX, PLANCHA, 24", WA	-	1	-	-
	004039	FIREBOX, PLANCHA, 30", WA	-	-	1	-
	003415	FIREBOX, PLANCHA, 36", WA	-	-	-	1
35	013389	SERVICE, HB, 1/4-20 X .625, ZN, PKG 8	1	1	1	1
36	AHCCL	CAP, MANIFOLD, LEFT, ASSY	1	1	1	1
37	AHCCR	CAP, MANIFOLD, RIGHT, ASSY	1	1	1	1
38	AHRGC	REAR GAS CONNECTION, 1" NPT	1	1	1	1
39	000254	UNION, 1.25" NPT, SET	1	1	1	1
40	004163	REGULATOR, STRAIGHT-THRU, 1"NPT, NG	1	1	1	1
	004162	REGULATOR, STRAIGHT-THRU, 1"NPT, LP	1	1	1	1
	004165	REGULATOR, STRAIGHT-THRU, 1-1/4"NPT, NG	1	1	1	1
	004164	REGULATOR, STRAIGHT-THRU, 1-1/4"NPT, LP	1	1	1	1
41	000470	ADJUSTABLE LEG, ASSY, 4"	4	4	4	4
42	014191	SERVICE, HEX BOLT, 1/4-20 X .625, SS, PKG 4	4	4	4	4
43	000501	PANEL, SIDE, LH, RANGETOP	1	1	1	1
44	000122	PANEL, SIDE, RH, RANGETOP	1	1	1	1
45	013303	SERVICE, HB, 1/4-20 X .5, ZN, PKG 8	1	1	1	1