



# Ships within 3-5 days

NOTE: Single-unit purchases qualify.



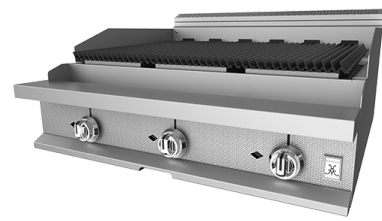
## Select your rangetop



36" French Top Rangetop



36" Sealed OR Open Burner Rangetop



36" Charbroiler Rangetop



36" Thermostatic OR Manual Griddle Rangetop

## OR Match it with a base



36" Standard or Convection Oven



36" Cabinet Base

## ADD in additional units



36" Salamander- Wall Mount



36" Cheesemelter- Wall Mount



**QUICK SHIP**

### How to Order

- Have your dealer reference “Hestan Quick Ship Program” on the Purchase Order.
- Specify Natural Gas (NG) or Liquid Propane (LP)
- Specify Legs or Casters.
- Add 4" Countertop Leg Kit (AHCL) for rangetops used as countertop units.

### Availability and Shipping

- Available through December 31, 2024.
- Add 1-2 additional ship days for LP units or elevations above 2,000 ft.
- Quantities higher than 2 per SKU may result in adjustment in lead time
- Additional discounts offered on all Quick Ship equipment. Ask dealer for details.

### Select Your Rangetop

Model	Description
HOP366	36" width 6-burner Open Burners with Standing Pilot
HSP366	36" width 6-burner All Single Flow Sealed Burners with Standing Pilot
HFT362	36" width 2-burner French Top
HCH36	36" width Charbroiler
HTG36	36" width Thermostatic Griddle
HMG36	36" width Manual Griddle

### Or Match It With A Base

Model	Description
HSOP36	36" width Single Standard Oven Base with Standing Pilot
HCOP36	36" width Single Convection Oven Base with Standing Pilot
HCB36	36" width Cabinet Base

### Add In Additional Units

Model	Description
HSMW36	36" width Wall Mount Salamander
HCMW36	36" width Wall Mount Cheesemelter