



Ships within 3-5 days

NOTE: Single-unit purchases qualify.



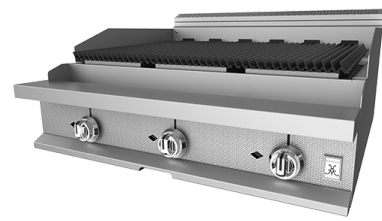
Select your rangetop



36" French Top Rangetop



36" Sealed OR Open Burner Rangetop



36" Charbroiler Rangetop



36" Thermostatic OR Manual Griddle Rangetop

OR Match it with a base



36" Standard or Convection Oven



36" Cabinet Base

ADD in additional units



36" Salamander- Wall Mount



36" Cheesemelter- Wall Mount



QUICK SHIP

How to Order

- Have your dealer reference “Hestan Quick Ship Program” on the Purchase Order.
- Specify Natural Gas (NG) or Liquid Propane (LP)
- Specify Legs or Casters.
- Add 4" Countertop Leg Kit (AHCL) for rangetops used as countertop units.

Availability and Shipping

- Available through December 31, 2024.
- Add 1-2 additional ship days for LP units or elevations above 2,000 ft.
- Quantities higher than 2 per SKU may result in adjustment in lead time
- Additional discounts offered on all Quick Ship equipment. Ask dealer for details.

Select Your Rangetop

Model	Description
HOP366	36" width 6-burner Open Burners with Standing Pilot
HSP366	36" width 6-burner All Single Flow Sealed Burners with Standing Pilot
HFT362	36" width 2-burner French Top
HCH36	36" width Charbroiler
HTG36	36" width Thermostatic Griddle
HMG36	36" width Manual Griddle

Or Match It With A Base

Model	Description
HSOP36	36" width Single Standard Oven Base with Standing Pilot
HCOP36	36" width Single Convection Oven Base with Standing Pilot
HCB36	36" width Cabinet Base

Add In Additional Units

Model	Description
HSMW36	36" width Wall Mount Salamander
HCMW36	36" width Wall Mount Cheesemelter